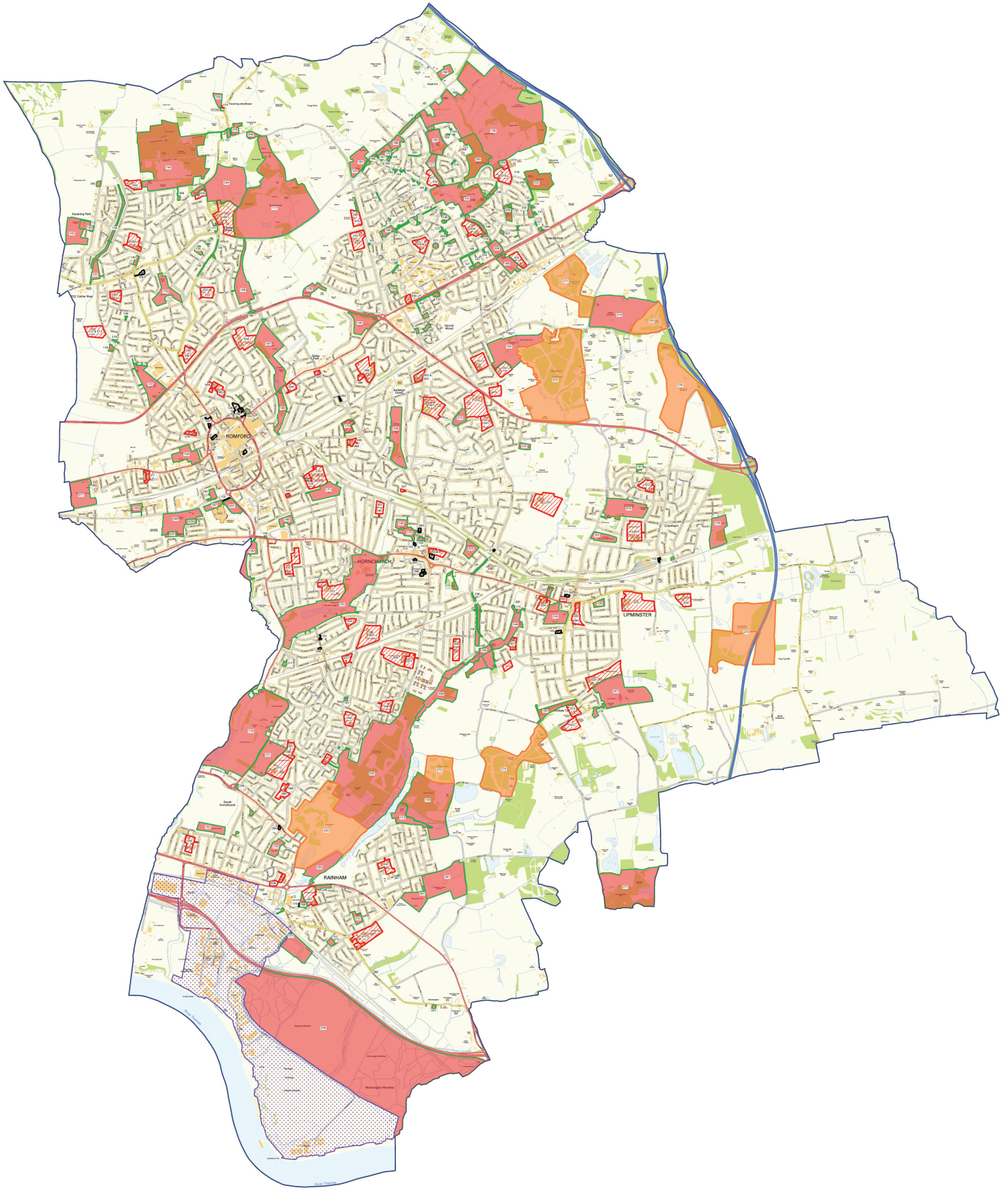


Schedule 2 Map

September 2019



Ma - Schools, Car Parks, Forestry Commission Parks & Open Spaces and Bid Area



London Borough of Havering
 Town Planning Department
 Romford, RM1 3BQ
 T: 01708 434343

Scale: 1:18000
 Date: 14 November 2018



© Crown copyright and database rights 2018
 Ordnance Survey 100024327